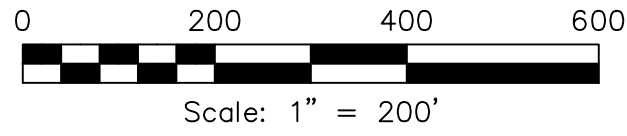
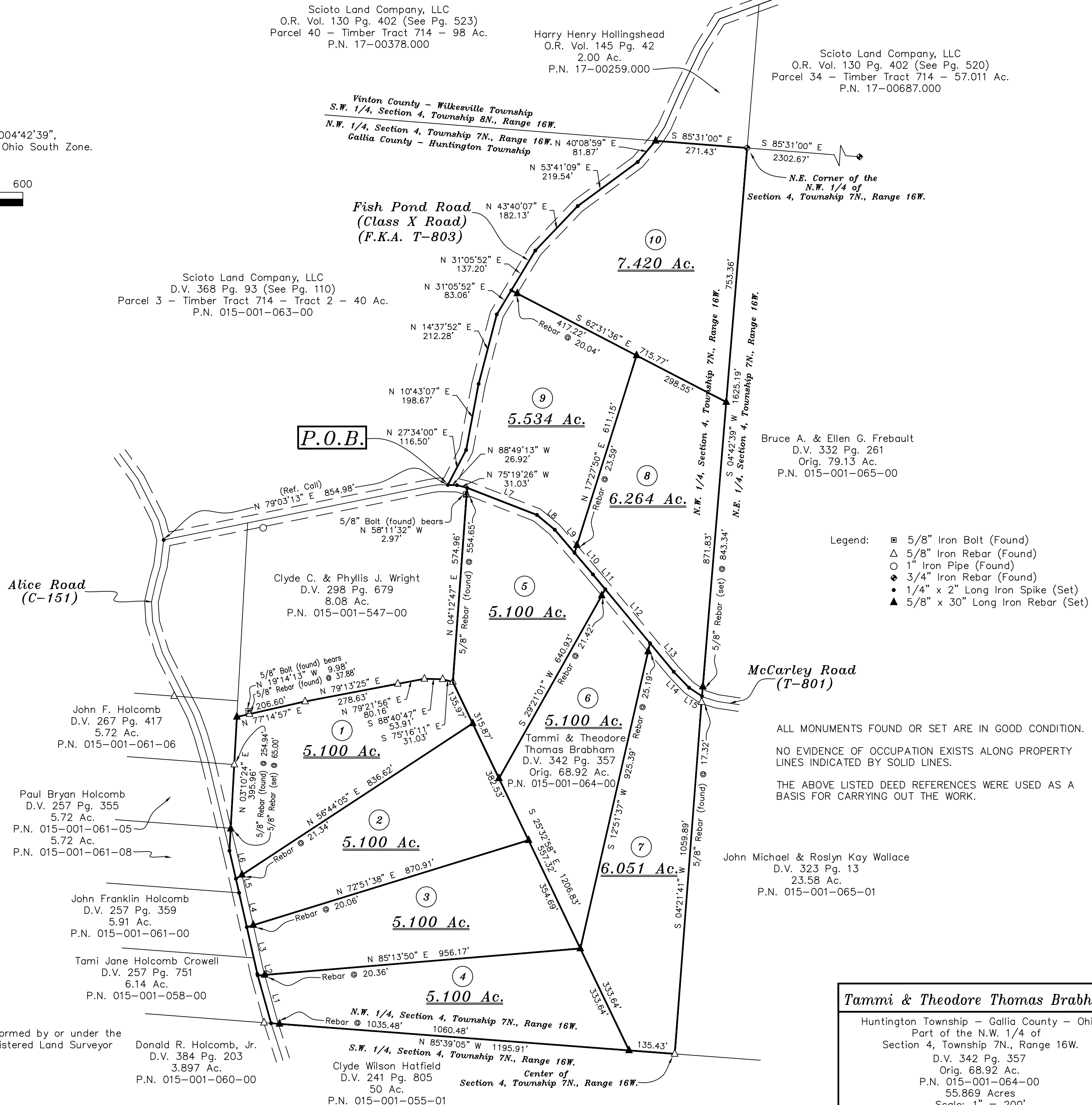


Bearings are based on the grid azimuth 004°42'39",
NAD 83, Ohio State Plane Coordinate System, Ohio South Zone.



LINE	BEARING	DISTANCE
L1	N 15°34'18" W	146.48'
L2	N 15°34'18" W	4.49'
L3	N 12°40'17" W	141.99'
L4	N 12°40'19" W	103.78'
L5	N 12°52'24" W	42.70'
L6	N 12°52'24" W	85.00'
L7	S 68°44'54" E	221.44'
L8	S 50°20'42" E	68.15'
L9	S 40°30'49" E	89.83'
L10	S 40°30'49" E	83.90'
L11	S 39°41'04" E	57.05'
L12	S 39°41'04" E	207.01'
L13	S 39°41'04" E	109.95'
L14	S 43°53'48" E	65.15'
L15	S 56°42'24" E	45.69'



- Legend:
- 5/8" Iron Bolt (Found)
 - △ 5/8" Iron Rebar (Found)
 - 1" Iron Pipe (Found)
 - ◆ 3/4" Iron Rebar (Found)
 - 1/4" x 2" Long Iron Spike (Set)
 - ▲ 5/8" x 30" Long Iron Rebar (Set)

ALL MONUMENTS FOUND OR SET ARE IN GOOD CONDITION.
NO EVIDENCE OF OCCUPATION EXISTS ALONG PROPERTY LINES INDICATED BY SOLID LINES.
THE ABOVE LISTED DEED REFERENCES WERE USED AS A BASIS FOR CARRYING OUT THE WORK.

Tammi & Theodore Thomas Brabham
Huntington Township – Gallia County – Ohio
Part of the N.W. 1/4 of
Section 4, Township 7N., Range 16W.
D.V. 342 Pg. 357
Orig. 68.92 Ac.
P.N. 015-001-064-00
55.869 Acres
Scale: 1" = 200'
April 13, 2020

This plat is based on an actual field survey performed by or under the direct supervision of Gerald Hart Wallingford, Registered Land Surveyor 6658 on April 13, 2020.

G.H. Wallingford Co.
47 North Main Street
Peebles, Ohio 45660
(937)587-3428

GERALD HART WALLINGFORD
R.L.S. No. 6658

Donald R. Holcomb, Jr.
D.V. 384 Pg. 203
3.897 Ac.
P.N. 015-001-060-00

Clyde Wilson Hatfield
D.V. 241 Pg. 805
50 Ac.
P.N. 015-001-055-01

John Michael & Roslyn Kay Wallace
D.V. 323 Pg. 13
23.58 Ac.
P.N. 015-001-065-01

Tammi & Theodore Thomas Brabham
D.V. 342 Pg. 357
Orig. 68.92 Ac.
P.N. 015-001-064-00

John F. Holcomb
D.V. 267 Pg. 417
5.72 Ac.
P.N. 015-001-061-06

Paul Bryan Holcomb
D.V. 257 Pg. 355
5.72 Ac.
P.N. 015-001-061-05
5.72 Ac.
P.N. 015-001-061-08

John Franklin Holcomb
D.V. 257 Pg. 359
5.91 Ac.
P.N. 015-001-061-00

Tami Jane Holcomb Crowell
D.V. 257 Pg. 751
6.14 Ac.
P.N. 015-001-058-00

Clyde C. & Phyllis J. Wright
D.V. 298 Pg. 679
8.08 Ac.
P.N. 015-001-547-00

Scioto Land Company, LLC
O.R. Vol. 130 Pg. 402 (See Pg. 523)
Parcel 40 – Timber Tract 714 – 98 Ac.
P.N. 17-00378.000

Harry Henry Hollingshead
O.R. Vol. 145 Pg. 42
2.00 Ac.
P.N. 17-00259.000

Scioto Land Company, LLC
O.R. Vol. 130 Pg. 402 (See Pg. 520)
Parcel 34 – Timber Tract 714 – 57.011 Ac.
P.N. 17-00687.000

Scioto Land Company, LLC
D.V. 368 Pg. 93 (See Pg. 110)
Parcel 3 – Timber Tract 714 – Tract 2 – 40 Ac.
P.N. 015-001-063-00

Bruce A. & Ellen G. Frebault
D.V. 332 Pg. 261
Orig. 79.13 Ac.
P.N. 015-001-065-00